

Could not find the insert button to send my log file. How can I get it to you?

x-plane 11.30 crashing

answer comment



Your answer

Font Size Format [icons]

B *I* U ~~S~~ x_a x^2 **A-** **A+** [Link icon] [Image icon] [Table icon] [List icon] [Omega icon] [Smiley icon] [Undo icon] [Redo icon] [Text color icon] [Background color icon]

Click this 'Link' icon & go to next page....

Email me (paulfisher@btinternet.com) if my answer is selected or commented on

Add answer

support questions only.
Please search for existing answers before posting your question. Off-topic questions will be locked.

If you're new, you'll need to **register** before **asking your first question**.

If your question is answered, click on the check mark to select the best response.

Categories

All categories

Related questions

- 11:30 crashes after download
- Default 737 XP 11.30 RC2
- Problems with the VEHX UDP-Command in X-Plane 11.30
- X-55 HOTAS issues after 11.30 update release

Could not find the insert button to send my log file. How can I get it to you?

x-plane 11.30 crashing

answer comment

Your answer

Font Size Normal

B I U S x₂ x² A⁻ A⁺

Text input area for the answer.

Email me (paulfisher@btinternet.com) if my answer is selected or commented on

Add answer

Link

Link Info Target Upload

Upload

Browse...

Send it to the Server

OK Cancel

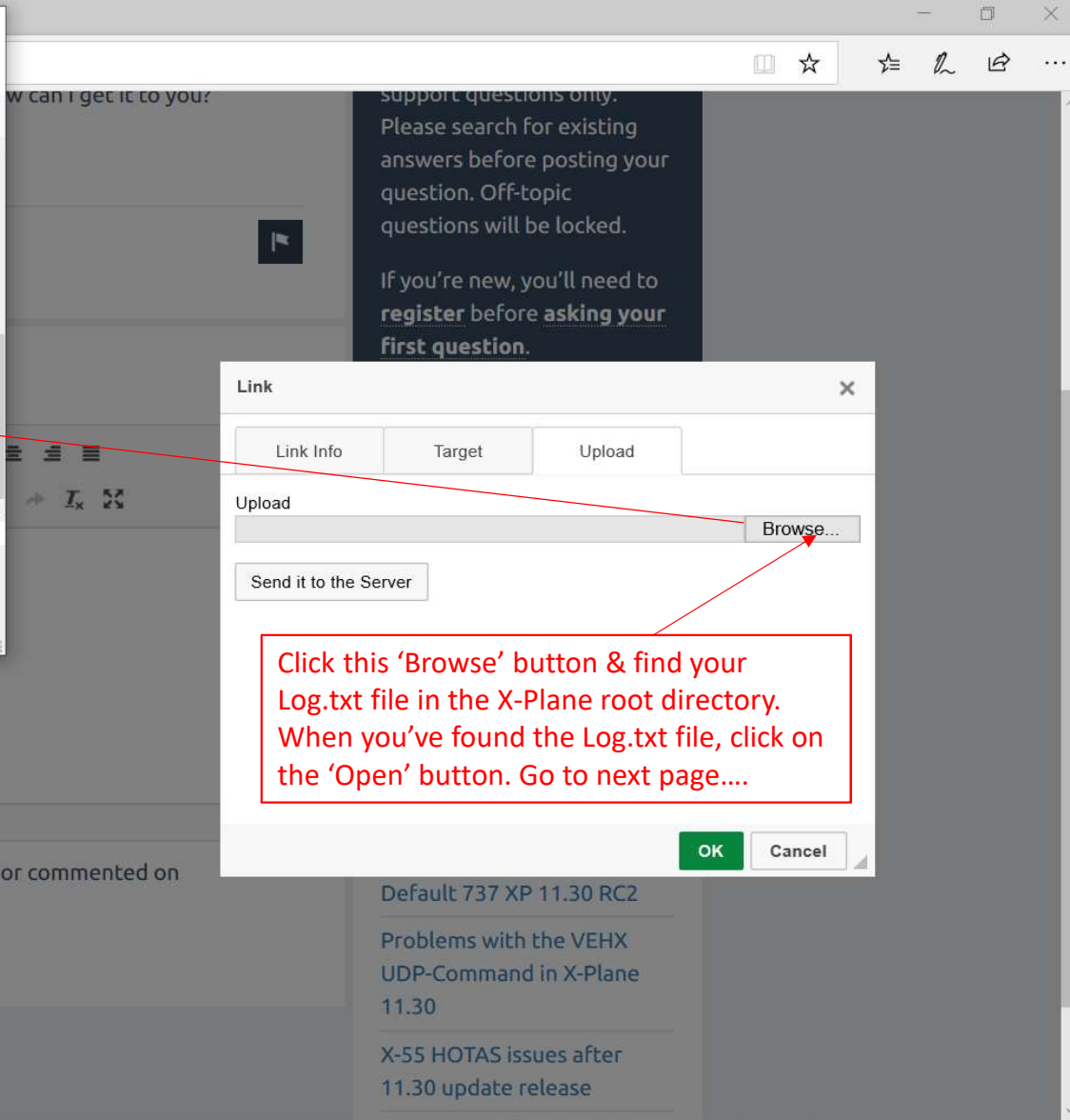
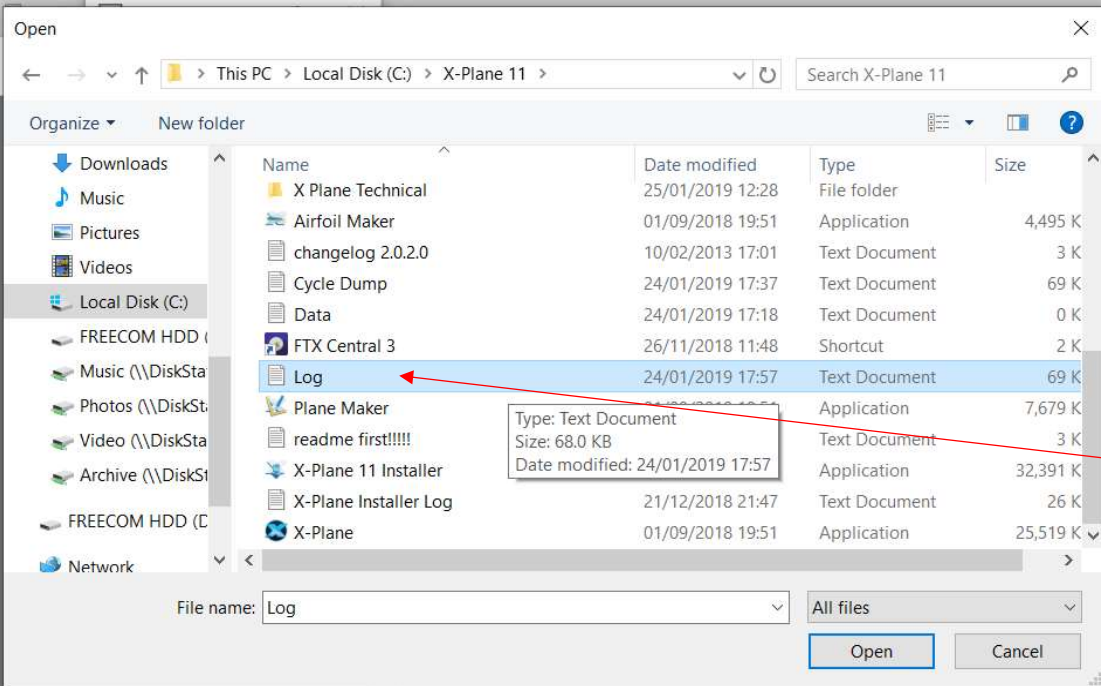
Click this 'Upload' tab & go to next page....

support questions only. Please search for existing answers before posting your question. Off-topic questions will be locked. If you're new, you'll need to **register** before **asking your first question**. If your question is answered, click on the check mark to select the best response.

Categories

All categories

- ### Related questions
- 11:30 crashes after download
 - Default 737 XP 11.30 RC2
 - Problems with the VEHX UDP-Command in X-Plane 11.30
 - X-55 HOTAS issues after 11.30 update release



Could not find the insert button to send my log file. How can I get it to you?

x-plane 11.30 crashing

answer comment

support questions only.
Please search for existing answers before posting your question. Off-topic questions will be locked.
If you're new, you'll need to **register** before asking your first question.

Your answer

Font Size Normal

B I U S x_2 x^2 **A-** **A+**

Email me (paulfisher@btinternet.com) if my answer is selected or commented on

Add answer

Link

Link Info Target Upload

Upload

C:\X-Plane 11\Log.txt

OK Cancel

Once you clicked the 'Open' button as per last page, the location of the Log.txt file will be shown here. Next click on 'Send it to Server' button. Go to next page....

Default 737 XP 11.30 RC2

Problems with the VEHX UDP-Command in X-Plane 11.30

X-55 HOTAS issues after 11.30 update release

If you're new, you'll need to **register** before asking your **first question**.
If your question is answered, click on the check mark to select the best response.

Your answer

Font Size Normal [Rich Text Editor Icons]

B I U S x_a x² | **A** [Color Picker] [Link] [Image] [Table] [Omega] [Smiley] [Undo] [Redo] [Fullscreen]

[Text Area]

Once you clicked the 'Send it to Server' button, the 'URL' box will show the unique location of your uploaded Log.txt file on the public domain. Then press the 'OK' button. Go to next page....

Email me (paulfisher@btinternet.com) if my answer is selected or commented on

Add answer

Link [X]

Link Info Target Upload

Display Text []

Link Type [URL]

Protocol [http://] URL [questions.x-plane.com/?qa=blob&qa_blobid=638093484340]

OK Cancel

X-55 HOTAS issues after 11.30 update release

How to pressurize a space vehicle in x-plane 11 v11.30

Could not find the insert button to send my log file. How can I get it to you?

x-plane 11.30 crashing

answer comment

Your answer

Font Size Normal [Rich Text Editor Icons]

Type your message in here i.e. This is a test to attach my X-Plane Log.txt file. (which other simmers just click on to open the file)

http://questions.x-plane.com/?qa=blog&qa_blobid=638093484340865834

The URL uploaded file location will then be placed in your 'Answer Box' so that others can click on it and see the Log.txt file within the X-Plane Q&A.

Email me (paulfisher@btinternet.com) if my answer is selected or commented on

Add answer

support questions only. Please search for existing answers before posting your question. Off-topic questions will be locked. If you're new, you'll need to register before asking your first question. If your question is answered, click on the check mark to select the best response.

Categories

All categories

Related questions

- 11:30 crashes after download
- Default 737 XP 11.30 RC2
- Problems with the VEHX UDP-Command in X-Plane 11.30
- X-55 HOTAS issues after 11.30 update release