

- Recycle Bin
- FTX Central 3
- Acrobat Reader DC
- HeavyLoad
- BT Virus Protect
- Microsoft Edge
- CPUID CPU-Z
- PeaZip
- Data Lifeguard ...
- Plane Maker
- GeForce Experience
- SimBrief Downloader
- Malwareby...
- X-Plane 11 Installer
- Navigraph Charts D...
- X-Plane 11
- Navigraph FMS Dat...
- TeamViewer 14

- View >
- Sort by >
- Refresh

- Paste
- Paste shortcut

- NVIDIA Control Panel**

- New >
- Display settings
- Personalize

Select a Task...

- 3D Settings
 - Adjust image settings with preview
 - Manage 3D settings
 - Configure Surround, PhysX
- Display
 - Change resolution
 - Adjust desktop color settings
 - Rotate display
 - View HDCP status
 - Set up digital audio
 - Adjust desktop size and position
 - Set up multiple displays
- Stereoscopic 3D
 - Set up stereoscopic 3D
 - View rating for games
- Video
 - Adjust video color settings
 - Adjust video image settings

Adjust Desktop Color Settings

Restore Defaults

You can adjust desktop color settings for your displays or enhance picture quality if you are using televisions.

1. Select the display you would like to change.



2. Choose how color is set.

Other applications control color settings

Use NVIDIA settings

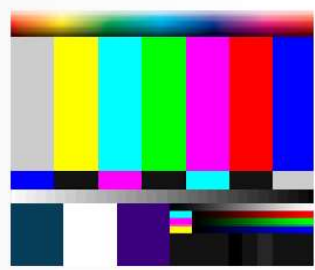
Color channel: All channels

Brightness: - [Slider] + 50%

Contrast: - [Slider] + 50%

Gamma: - [Slider] + 1.00

Very high and very low Brightness and Contrast values can limit the Gamma range.



3. Apply the following enhancements:

Digital vibrance: - [Slider] + 50%

Hue: - [Slider] + 0°

Reference image: 1 2 3

Content type reported to the display:
Auto-select (recommended)

Apply Cancel

< Main Menu

Settings



General Sound **Graphics** Network Data Output Joystick Keyboard GPS Hardware VR Hardware

Visual Effects High (HDR)

Texture Quality Maximum

94 MB of textures currently loaded

Antialiasing 8x SSAA+FXAA (highest quality)

Draw shadows on scenery

Number of World Objects Medium

Reflection Detail Minimal

Draw parked aircraft

ACCESSIBILITY

Base Font Size 14 px

User Interface Size 100% ▾

MONITOR CONFIGURATION

MAIN MONITOR Full Screen Simulator ▾

Resolution Default Monitor Settings ▾

— VISUALS SETTINGS

Default view [w] Forward with 3-D cockpit ▾

Allow windshield effects

Reset Visual Settings

— FIELD OF VIEW

Lateral field of view 101.35 degrees

Use non-proportional vertical field of view

MONITOR 1 Unused ▾

- Use vsync
- Enable TrackIR & TrackHat view tracking in 3-D cockpit
- Enable Matrox TripleHead2Go

Done